



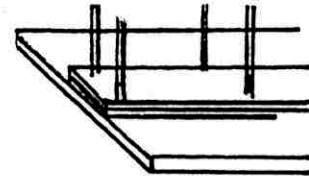
DAGENDOR®

INSTALLATION INSTRUCTIONS OF FOLDING CLOSURES

Before proceeding, please make sure that the site is compliant with the following steps. If not, please contact your sale's representative or our head office at **1-800-301-0097**.

1.-Make sure that the **site measurements** (height, width, configuration) correspond with the shop drawing(s).

2.-Verify that the **bulkhead is strong enough** to carry the closure without sagging, especially in the stacking area.



3.-Check that you have a **clearance of 4 1/2"** each side of **⌀** of track for the entire length of the closure, stacking included. Make sure there are no obstructions.

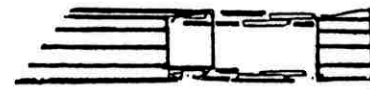
4.-Ensure that the **depth of the stacking area** is sufficient. The rule of thumb is 2" per linear foot of curtain. (Ex.:A curtain of 12'0" wide would necessitate 24" of stacking space).

INSTALLATION

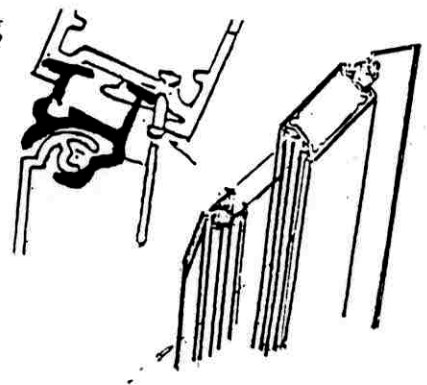
5.-To install the track, begin by inserting joint alignment pins into the track sections and continue by installing the longest length of track, moving towards the locking point(s). The screws should be centered 6" apart in stacking area and on curve(s), 12" apart elsewhere. Using a flat screwdriver and a hammer, push all four joint alignment pins halfway across each section of track(s).

Make sure that all **joints are tight, aligned and deburred**.

Leave one section of track open to insert the curtain.

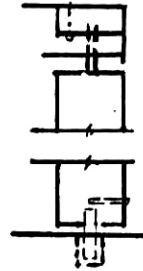


6.-Remove the curtain's section(s) from the crate and start inserting the rollers one by one (making sure that **none are sideways**) into the open section of the track. As you did with the track(s), start with the section(s) closest to the stacking area and move towards the locking point. (Section's sequence is shown on packing slip; A-B-C-...). Join closure's sections together with steel rivet (1/8" - 5/8").

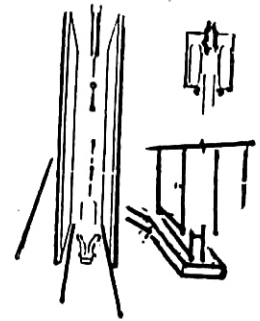


7.-Install the balance of the track. Butt the wall jamb against the track using a level and trim at bottom if necessary.

8.-a) If equipped with a **fixed end post #10**;
Keeping the curtain loose, screw the fixed end post to the wall. Attach curtain to fixed end post. If your door is model **S-126**, install top **swivel channel** so that post swivels while collapsing.



8.-b) If equipped with a **trailing post #8** (floating);
Lock the curtain into the wall jamb (or bi-part together) and extend it, leaving approximately 2" of slack in the door. Locate and attach the **track stopper** above. Maintaining the trailing member in its position, locate and install "**V**" **stopper** on the floor. Adjust back post pin height 1/8" of floor.



9.-To determine the floor socket's location, lock the closure fully extended and drop the shoot bolt(s). Locate the shoot bolt(s) and mark the floor for drilling. Slide the curtain back to its open position. Drill 3/4" hole(s) in the floor and install dust-proof floor socket(s). Be carefull not to damage floor.

10.-Verify that the installation is completed and that the closure is working smoothly. **Open and close** the curtain several times, **testing locks and shootbolts**. Wipe it clean and that's it, you're done! We hope, that installing one of our closures, has been a **pleasant experience**.